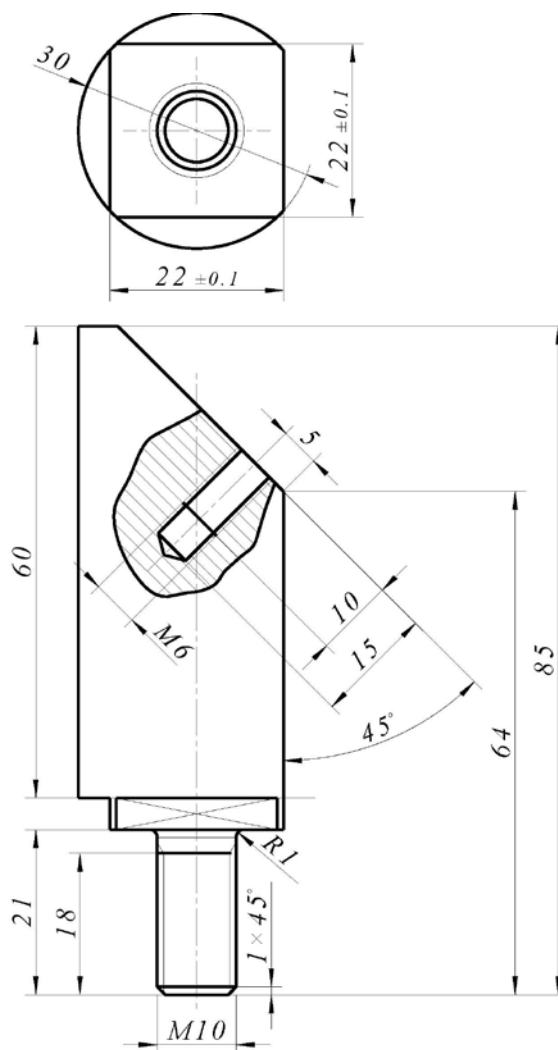


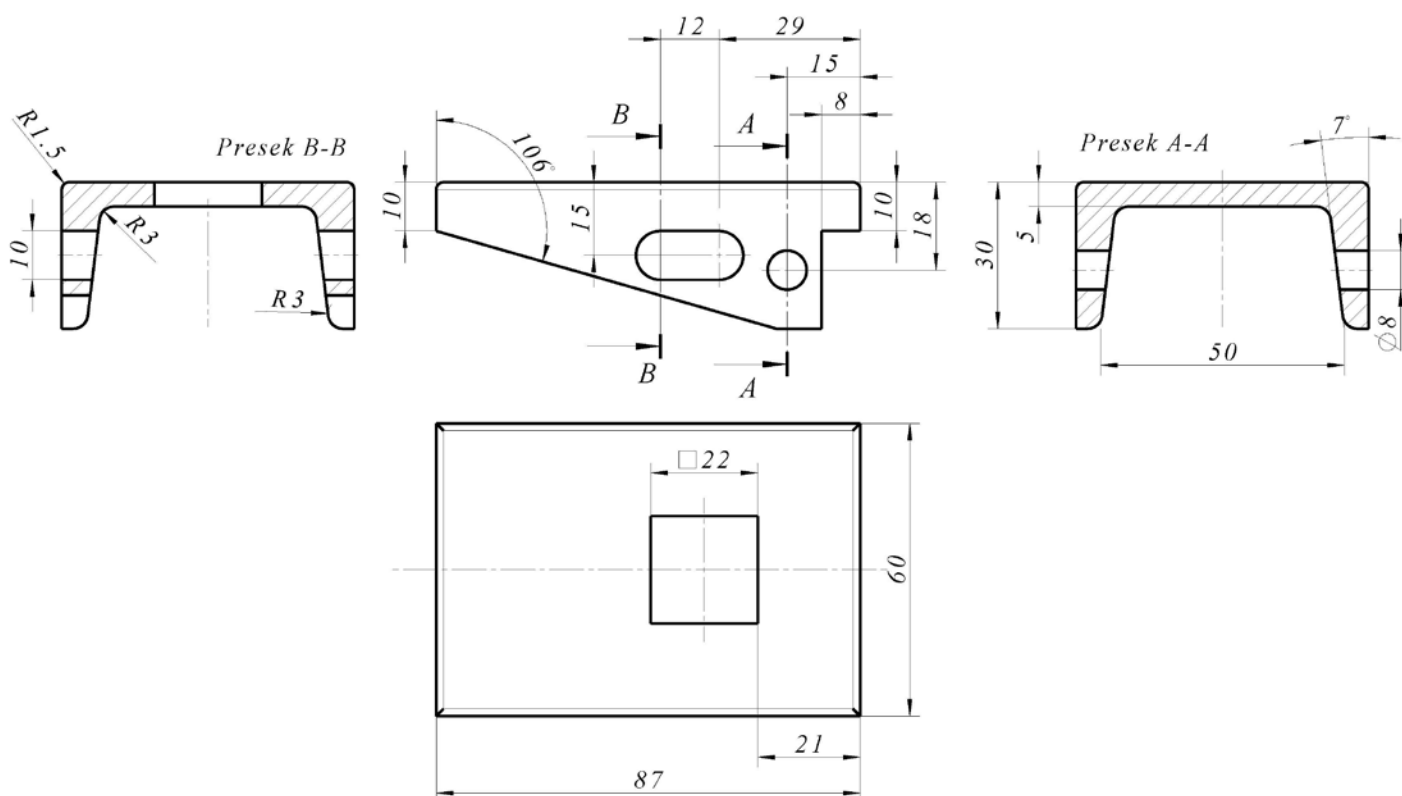
Slika 1: Tehnički crtež sklopa pribora

KOMPONENTE SKLOPA	
1. Navrtka M10 (Čelik)	2. Podložna pločica tipa A (Čelik)
<p>Technical drawing of an M10 nut. The front view shows a hexagonal nut with a diameter of 22 and a section line A-A. The side view shows a height of 8 and a 30-degree chamfered edge. The thread is labeled M10.</p>	<p>Technical drawing of a type A washer. The front view shows a circular washer with an outer diameter of 35 and a section line A-A. The side view shows a thickness of 4 and an inner diameter of 12.</p> <p style="text-align: right;"><i>Presek A-A</i></p>

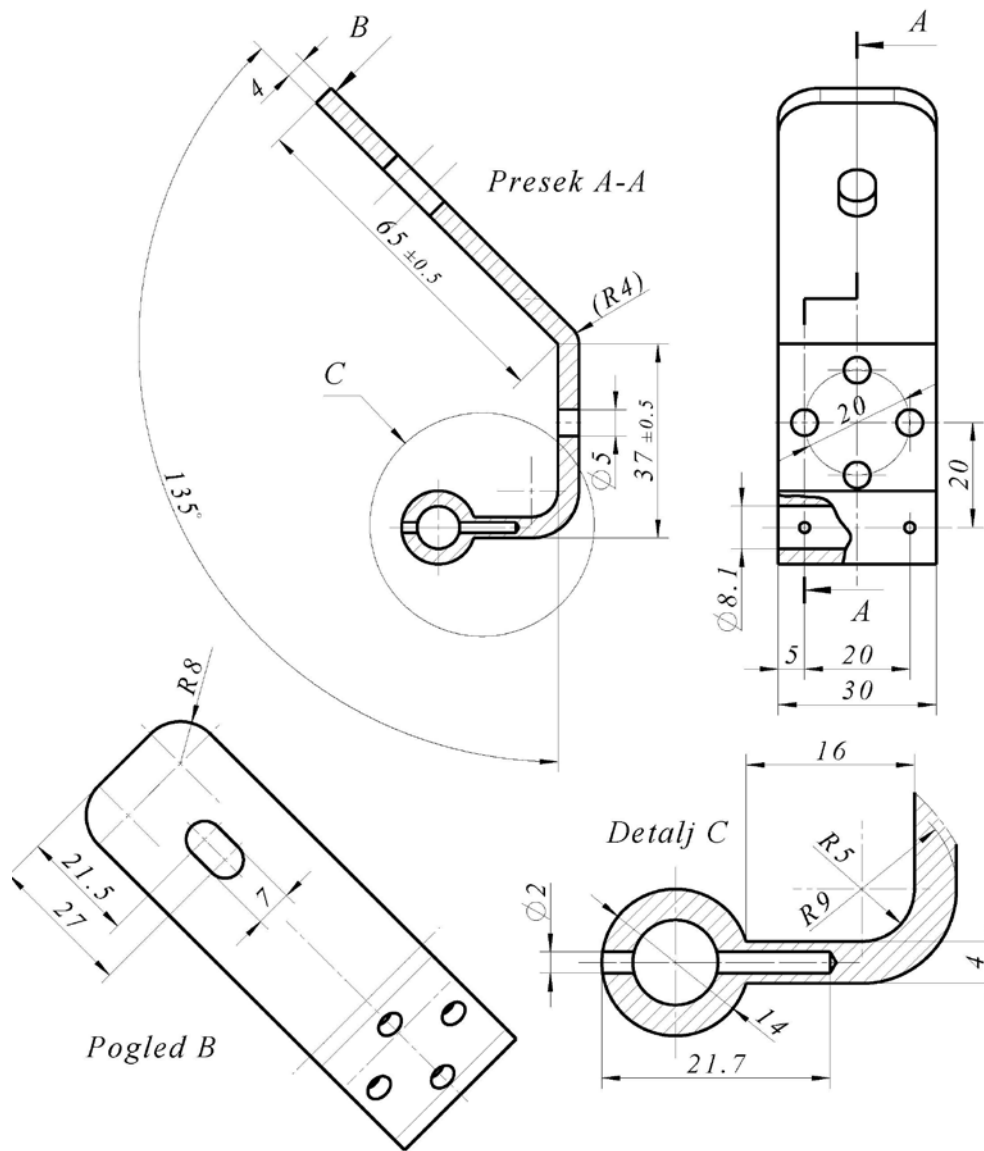
3. Telo pribora (Čelik)



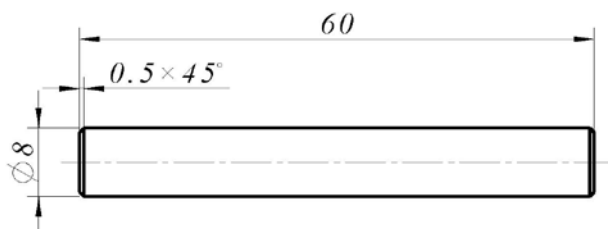
4. Postolje pribora (Čelik)



5. Obloga (Čelik)



6. Osovina (Čelik)



7. Stezni zavrtanj M6

