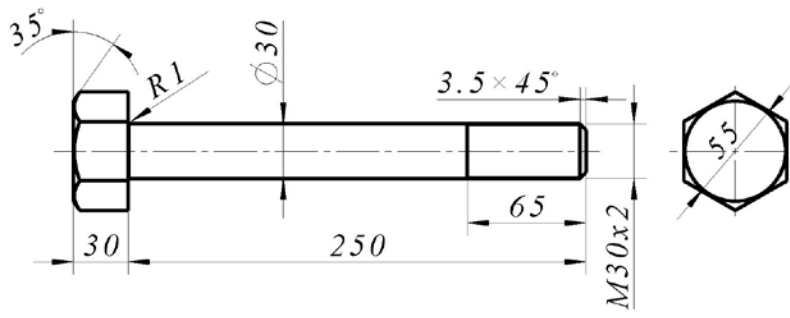
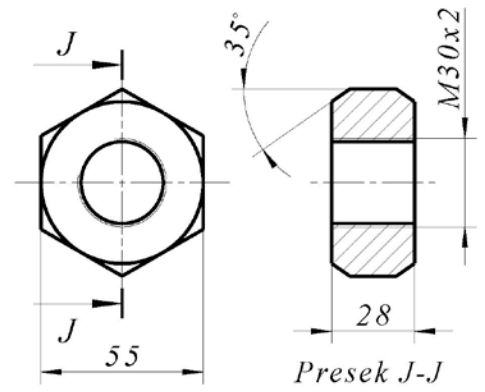


1. Garnitură	2. Surub M30x155
<p>Technical drawing of the gasket (Garnitură). It shows a top view with a $20 \times 45^\circ$ chamfer and a side view (Presek I-I) with dimensions: 12, 105, 45, 12, and a diameter of $\phi 40$. Section lines I-I are shown.</p>	<p>Technical drawing of the M30x155 screw. It shows a side view with dimensions: 155, 55, $3.5 \times 45^\circ$, 25, $\phi 43$, $\phi 30$, R2, and R1. The thread is labeled M30x2.</p>
3. Element interior inferior excentric	
<p>Technical drawing of the eccentric interior element. It shows a top view with dimensions: $\phi 47$, 41, $\phi 30$, 75, 5, R220, R230, R130, R100, and 290. It also shows a side view with dimensions: 150 and 100.</p>	

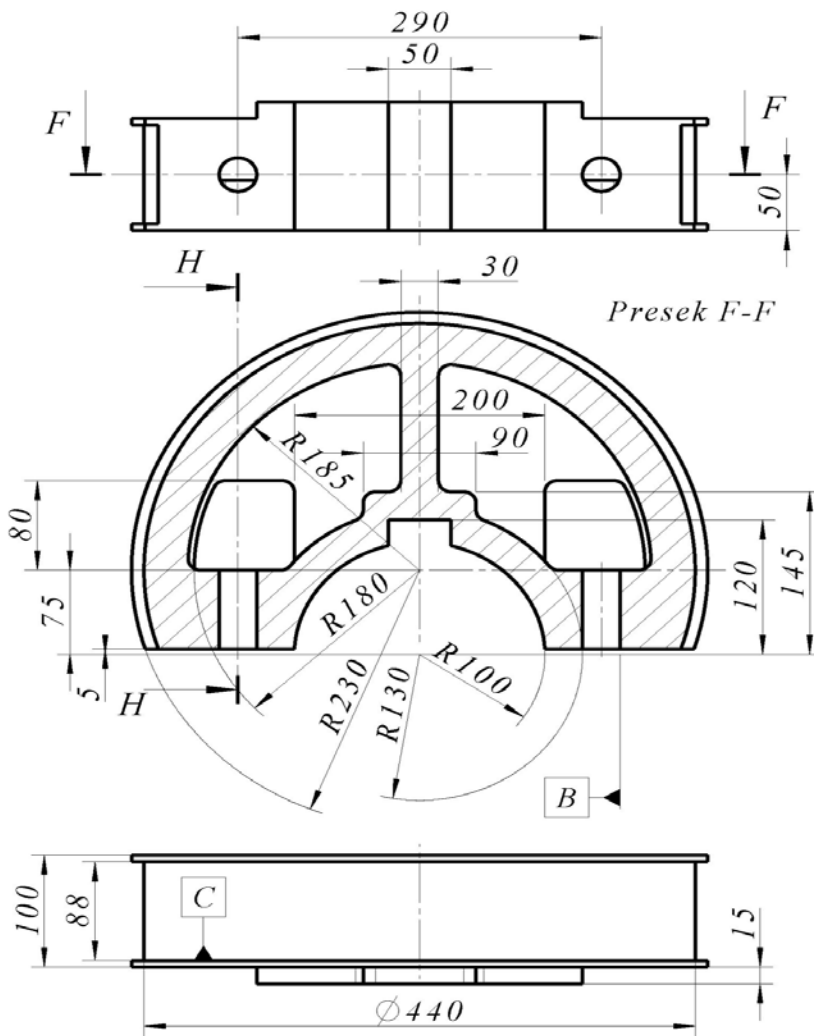
4. Surub M30x250



5. Piulita M30



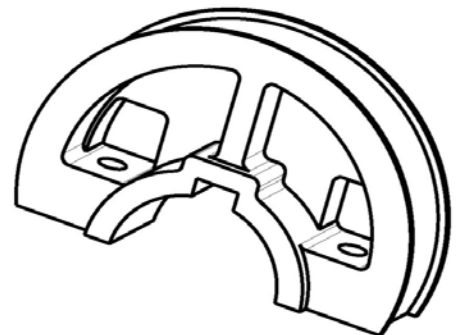
6. Element interior superior excentric



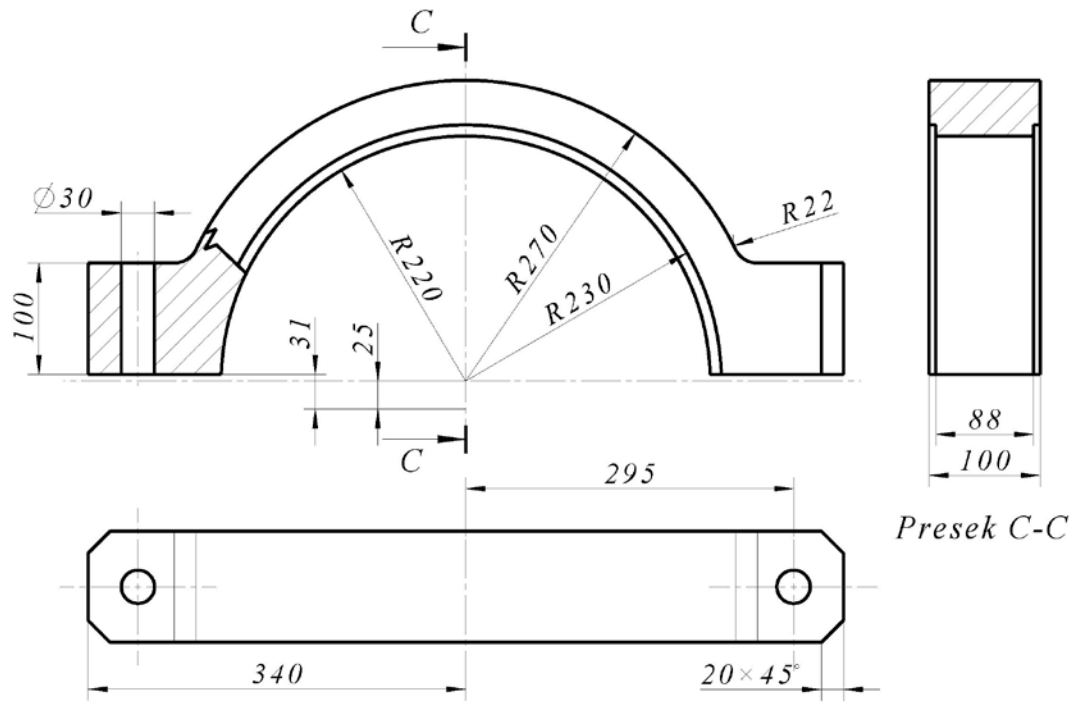
Presek H-H

Presek F-F

Razele necotate R10 mm



7. Element superior de inchidere



8. Element inferior de inchidere

